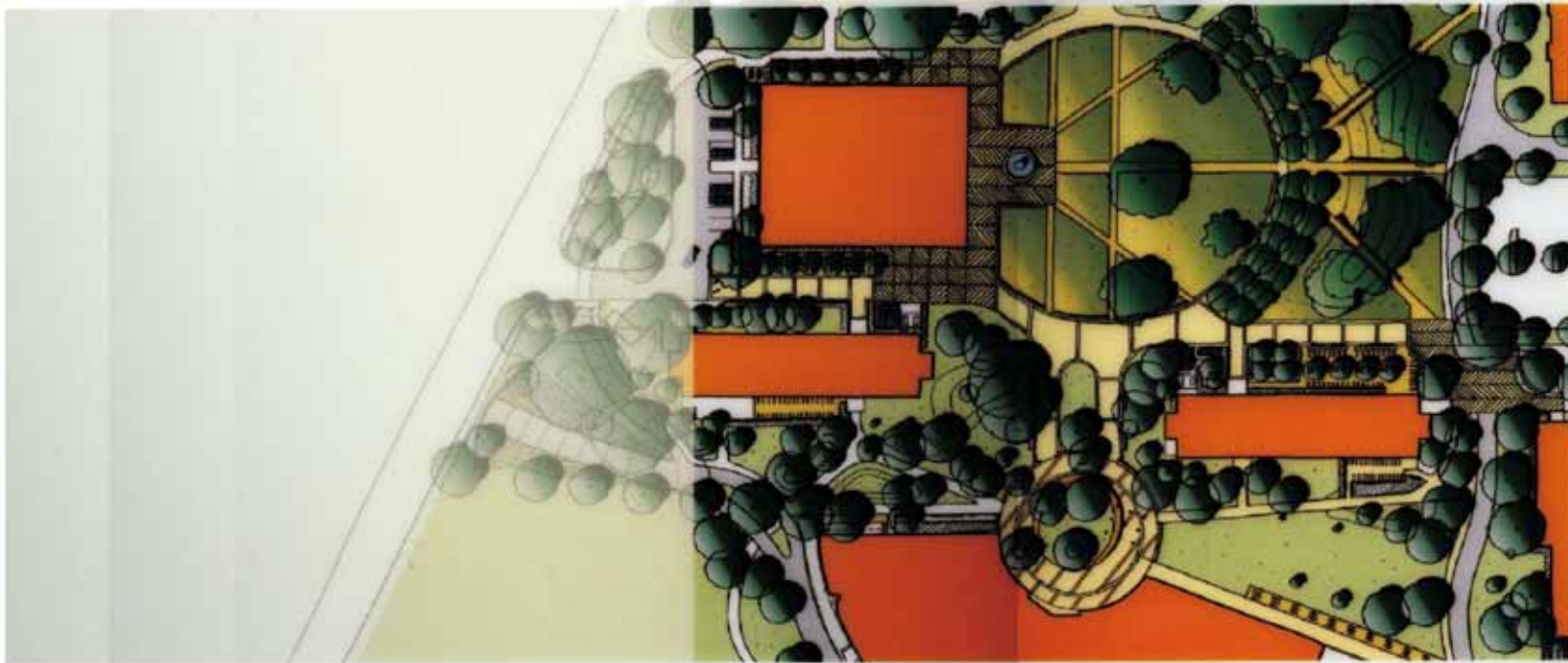


University of California, Davis
SEGUNDO PRECINCT STUDY



S A S A K I



Illustrative Plan
UC DAVIS SEGUNDO PRECINCT STUDY



Table of Contents

The study addresses the University of California at Davis Segundo Precinct that houses the University's first year class. The works provides guidance for the siting of a new residence services building and the creation of a new quad, made possible by the design of a new dining commons (by Sasaki Associates).

As with the Core Campus Study prepared by Sasaki Associates, the Segundo Precinct Study guides new construction to improve the quality of life on campus, defining the campus's civic structure, open space framework, and circulation network.

The precinct study specifically focuses on the formulation of the open space system supported and coordinated with the development of landscape improvements, lighting, circulation patterns, and utilities.

Exhibits

- 1** Context
- 2** Illustrative Plan
- 3** Pedestrian Circulation
- 4** Bicycle Circulation and Parking
- 5** Transportation and Parking
- 6** Lighting Zones
- 7** Trash and Service
- 8** Fire / Emergency Access
- 9** Main Utility Corridor



Core Campus
UC DAVIS SEGUNDO PRECINCT STUDY

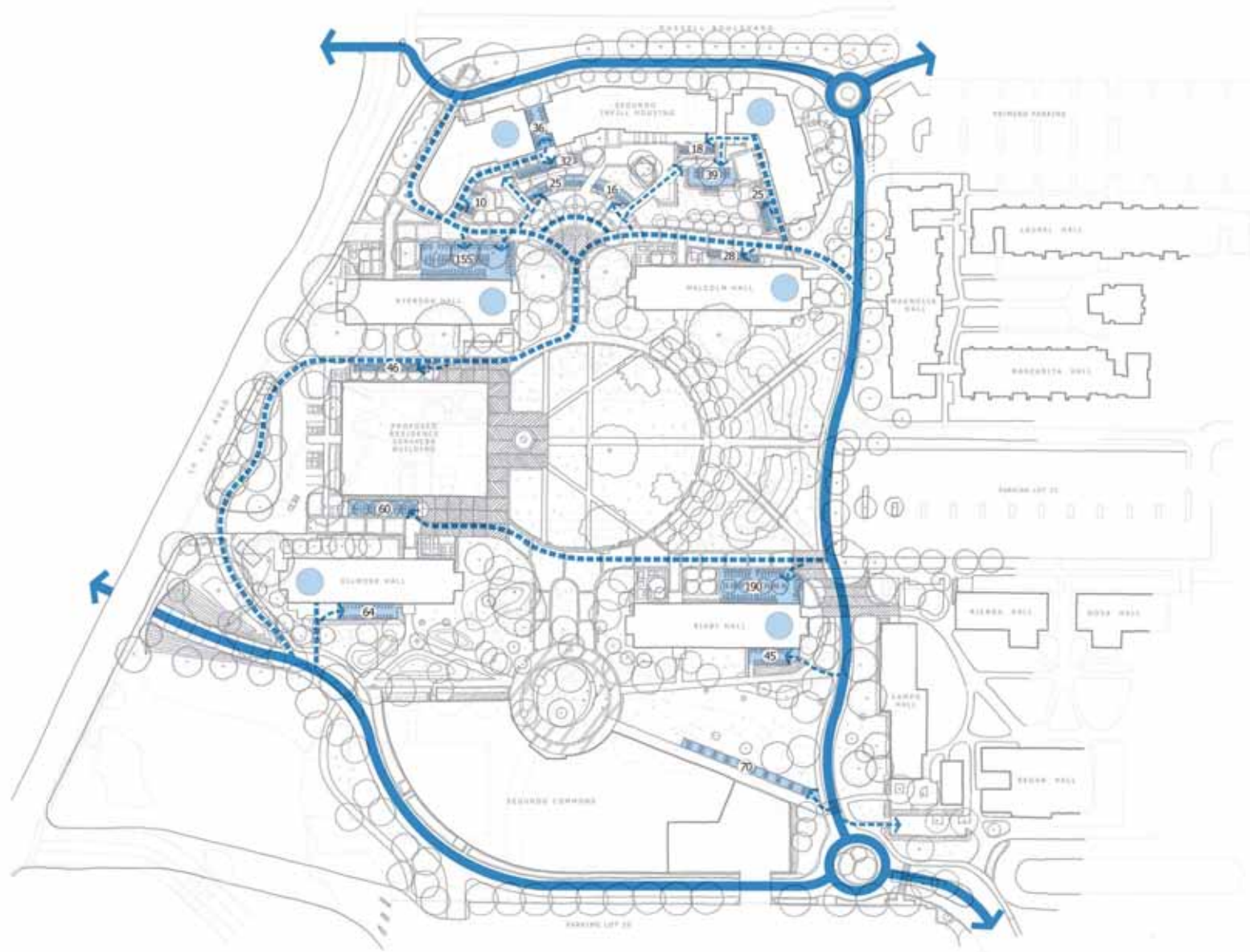
LEGEND

- ① Segundo Hill Housing
- ② Ryerson Hall
- ③ Malcolm Hall
- ④ Magnolia Hall
- ⑤ Existing Segundo Commons
- ⑥ Gilmore Hall
- ⑦ Bibby Hall
- ⑧ Campo Hall
- ⑨ Future Segundo Commons



Context

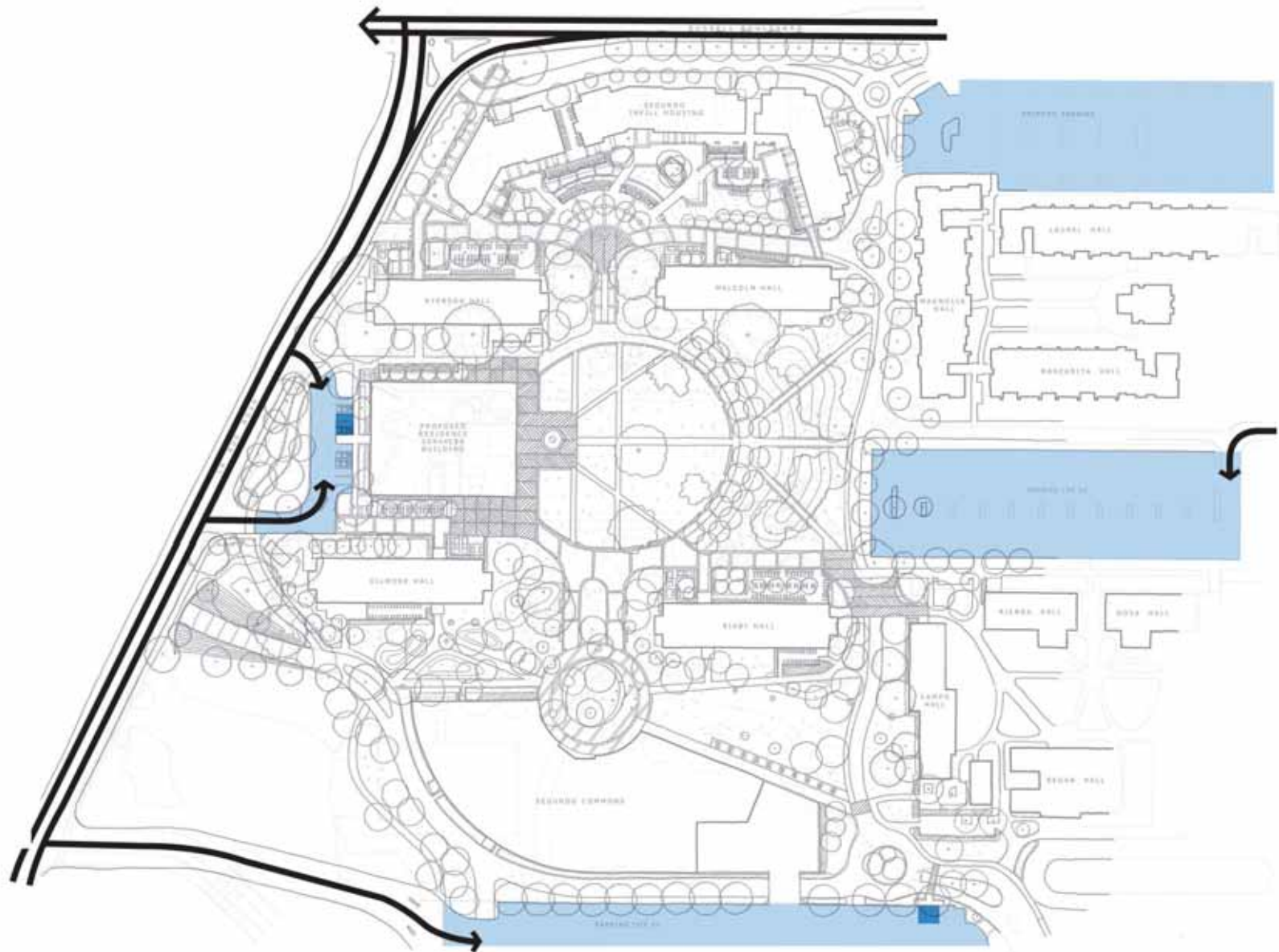




- LEGEND**
- Bicycle Route
 - Precinct Bicycle Access
 - Bicycle Parking
 - Bicycle Parking Under Cover
 - Approximate Bicycle Parking Capacity

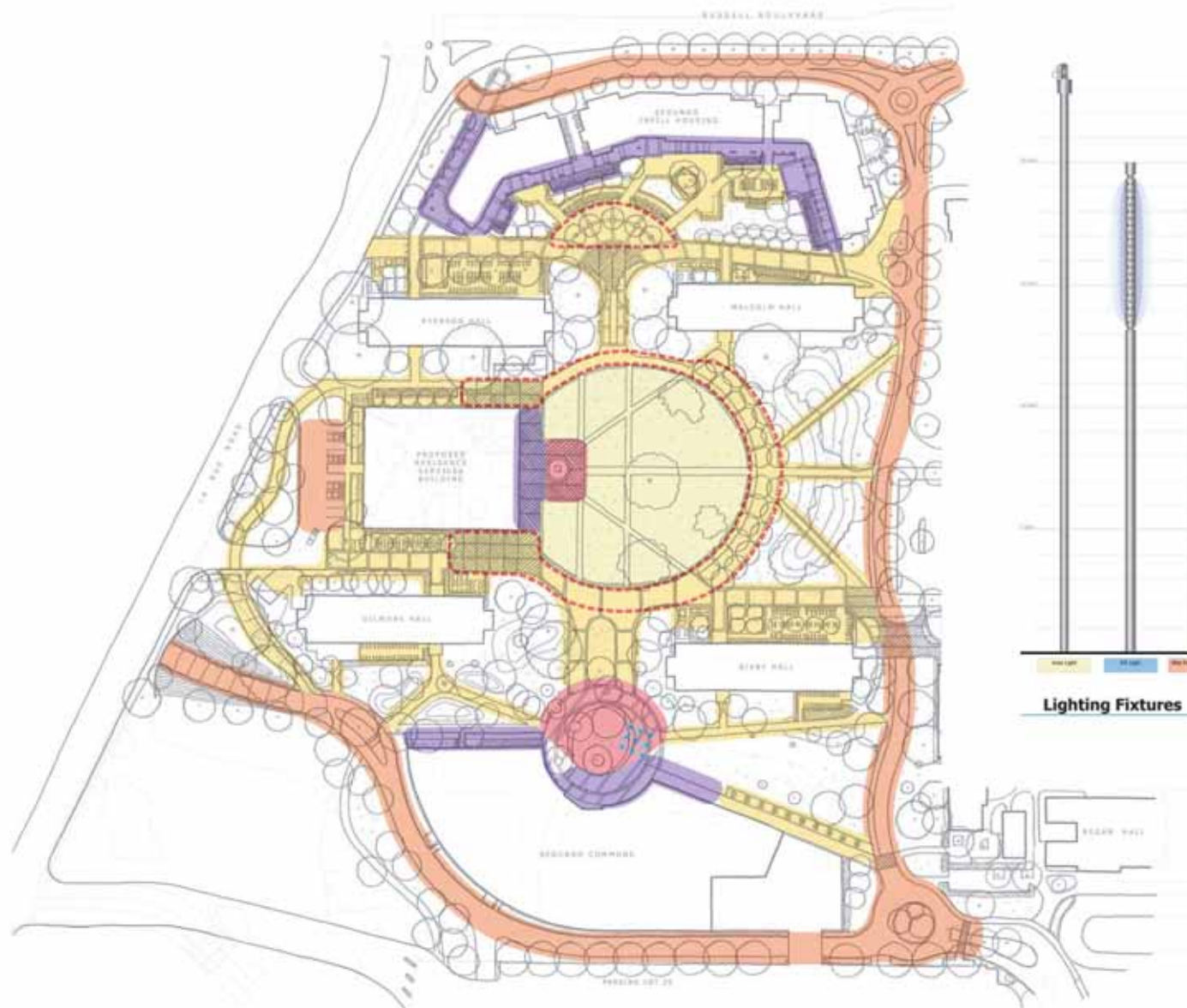


Bicycle Circulation and Parking
UC DAVIS SEGUNDO PRECINCT STUDY

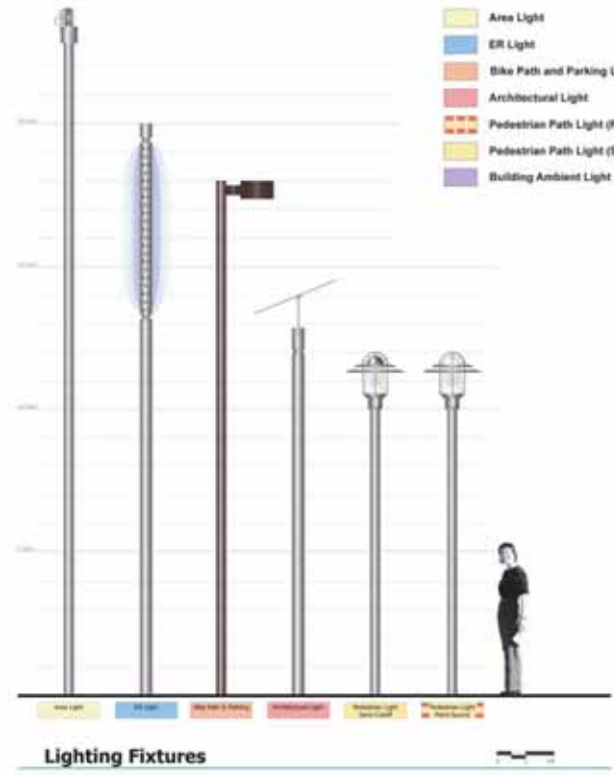


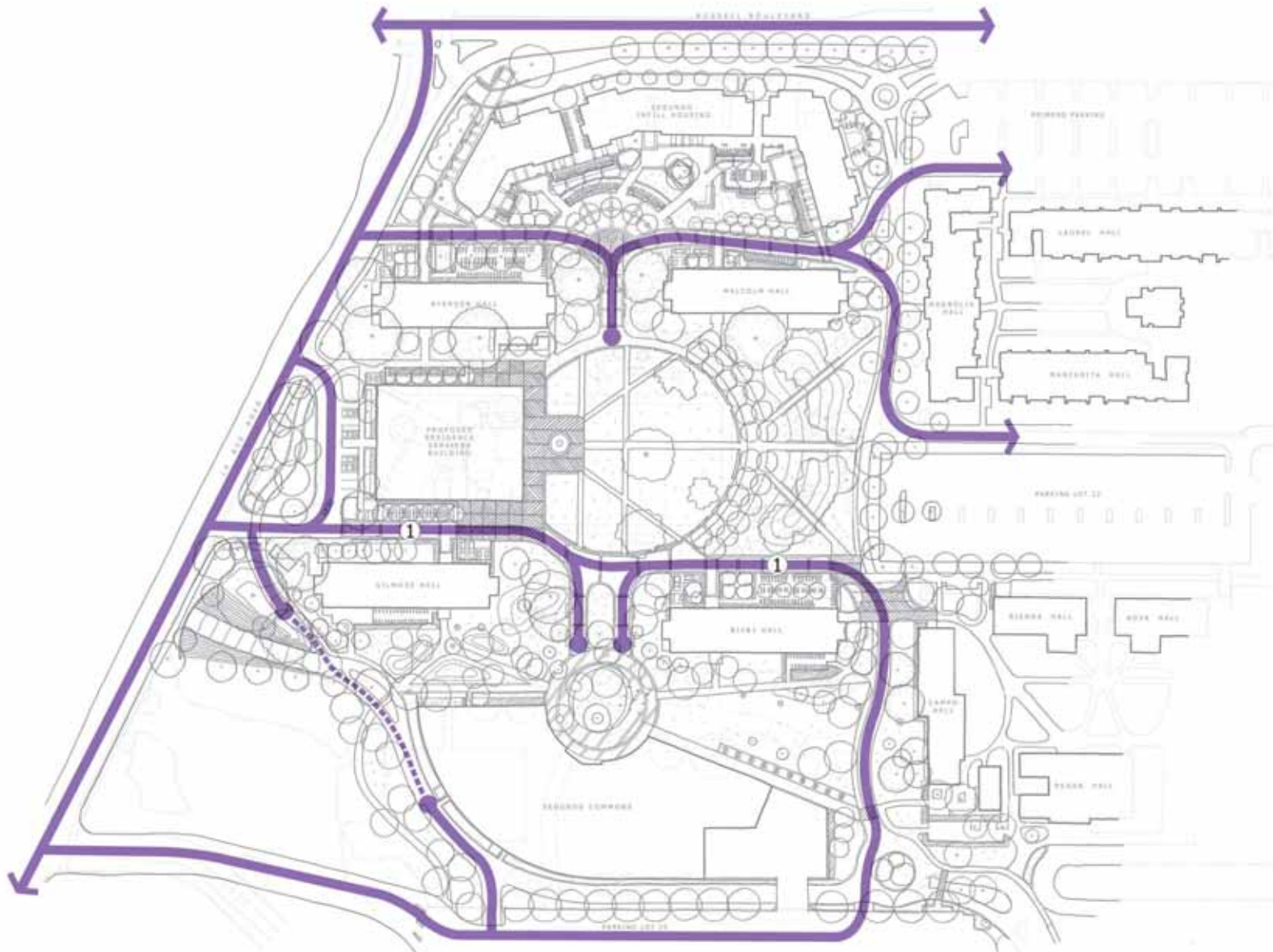
- LEGEND**
-  Vehicular Access
 -  Parking
 -  Handicap Parking

Transportation and Parking
UC DAVIS SEGUNDO PRECINCT STUDY



- LEGEND**
- Area Light
 - ER Light
 - Bike Path and Parking Light
 - Architectural Light
 - Pedestrian Path Light (Point-Source)
 - Pedestrian Path Light (Semi-Cutoff)
 - Building Ambient Light





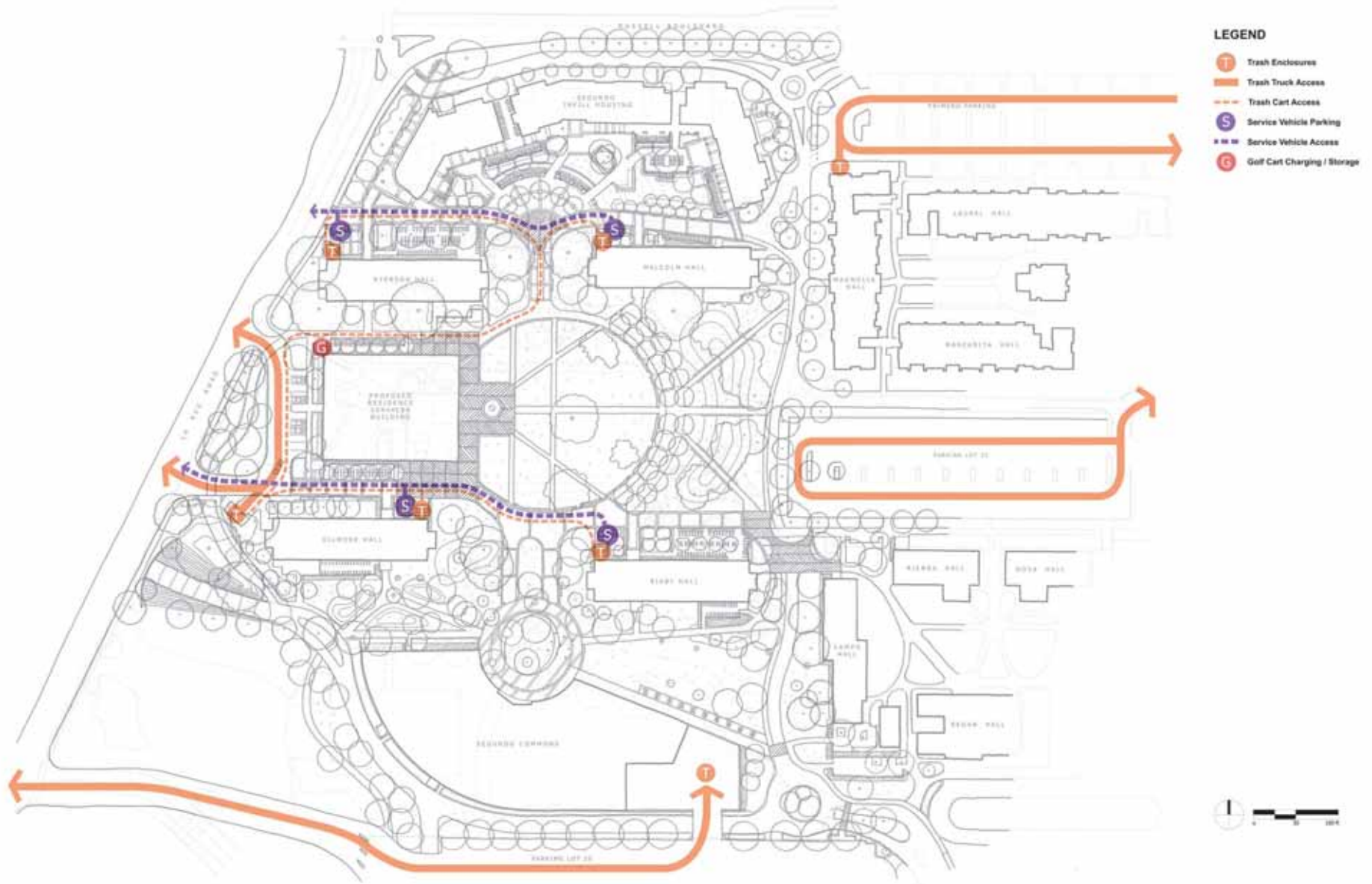
LEGEND

-  Fire / Emergency Access: 20 ft wide
-  Fire / Emergency Access: 10 ft wide

NOTES

- 1** Location differs from existing conditions; further review required





Trash and Service
UC DAVIS SEGUNDO PRECINCT STUDY



LEGEND

- | Exist. | Prop. | |
|--------|-------|----------------|
| - - - | - - - | Storm Sewer |
| - - - | - - - | Sanitary Sewer |
| - - - | - - - | Domestic Water |
| - - - | - - - | Chilled Water |
| - - - | - - - | Steam |
| - - - | - - - | Gas |
| - - - | - - - | Electric |
| - - - | - - - | Communications |



Main Utility Corridors
UC DAVIS SEGUNDO PRECINCT STUDY